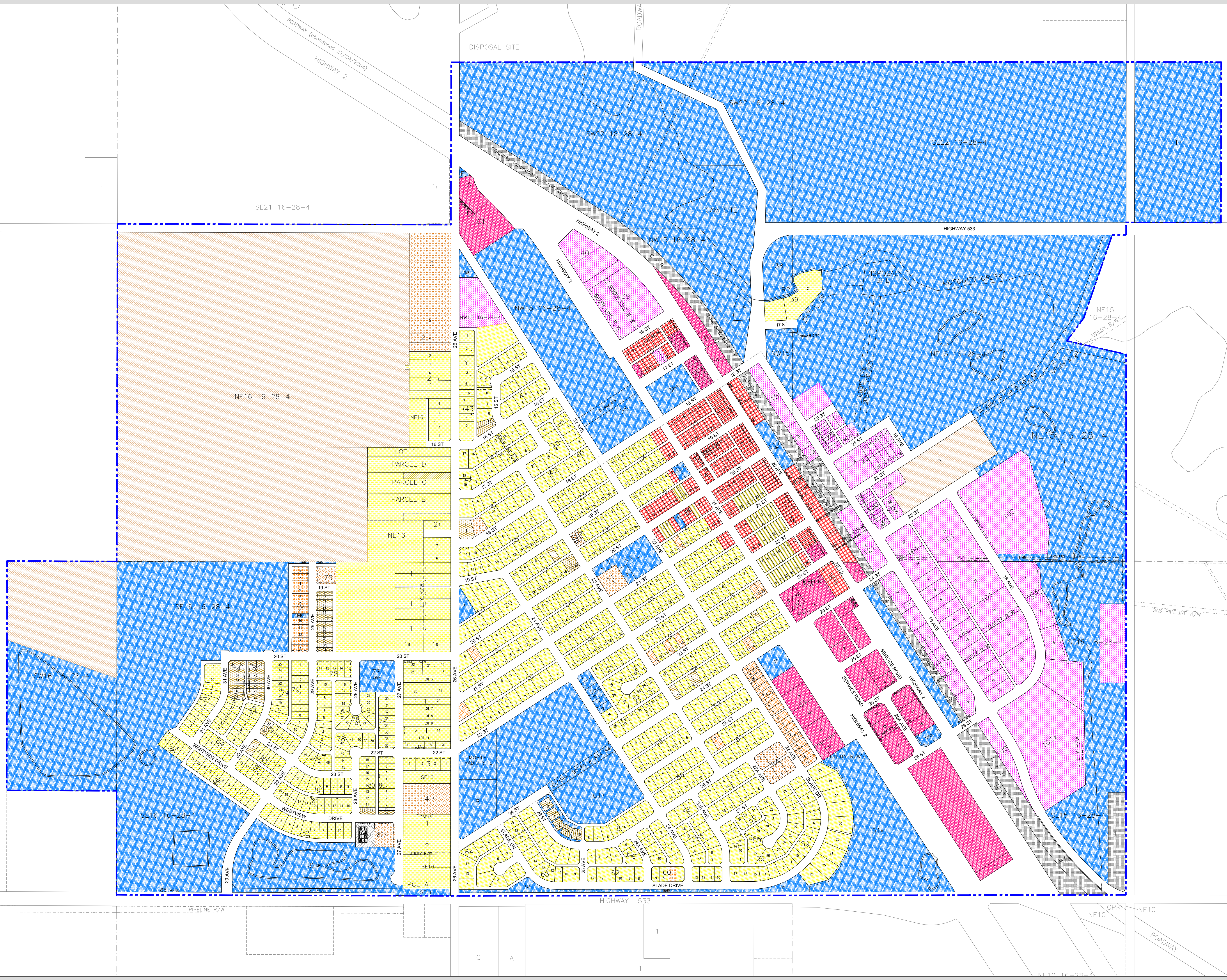


**TOWN OF NANTON**  
 Ptn NE 15, All NW 15, SE 15, SW 15,  
 Ptn's SW 16, All NE & SE 16,  
 Ptn's SE 22, SW 22 & SW 23  
 All In Twp 16, Rge 28, W4M  
 --- TOWN BOUNDARY



**Land Use Districts**  
 Bylaw No. 1246/13; June 17, 2013  
 With amendments to and including Bylaw 1375/23

	Single Detached Residential	R1
	Two-Unit Residential	R2
	Multiple Residential	R3
	Manufactured Home Residential	R4
	Residential Mixed Use	R5
	Retail / General Commercial	C1
	Highway Commercial	C2
	Industrial	IN
	Direct Control	DC
	Direct Control 1	DC1
	Public Institutional	PI
	Agricultural Transitional	AT

